

Woodinville Wine Country

Fabric for wall quilt:

- 14 fat quarters of assorted blue* fabrics for blocks
- 14 fat quarters of assorted green* fabrics for blocks
- 1/4 yard of light brown fabric for trellis shading
- 3/4 yard of medium brown fabric for trellis shading
- 1/2 yard of cream fabric for trellis
- 1 fat quarter of medium-dark brown fabric for vines
- 4 fat quarters of batik green fabric for leaves
- 5 fat quarters of mixed purple fabrics for grapes
- 1 1/3 yards of dark green fabric for inner border
- 1 3/4 yards of medium-dark green fabric for outer border and binding
- 3 yards of 12" wide fusible webbing
- 3 3/4 yards of backing fabric
- 64" square or larger batting

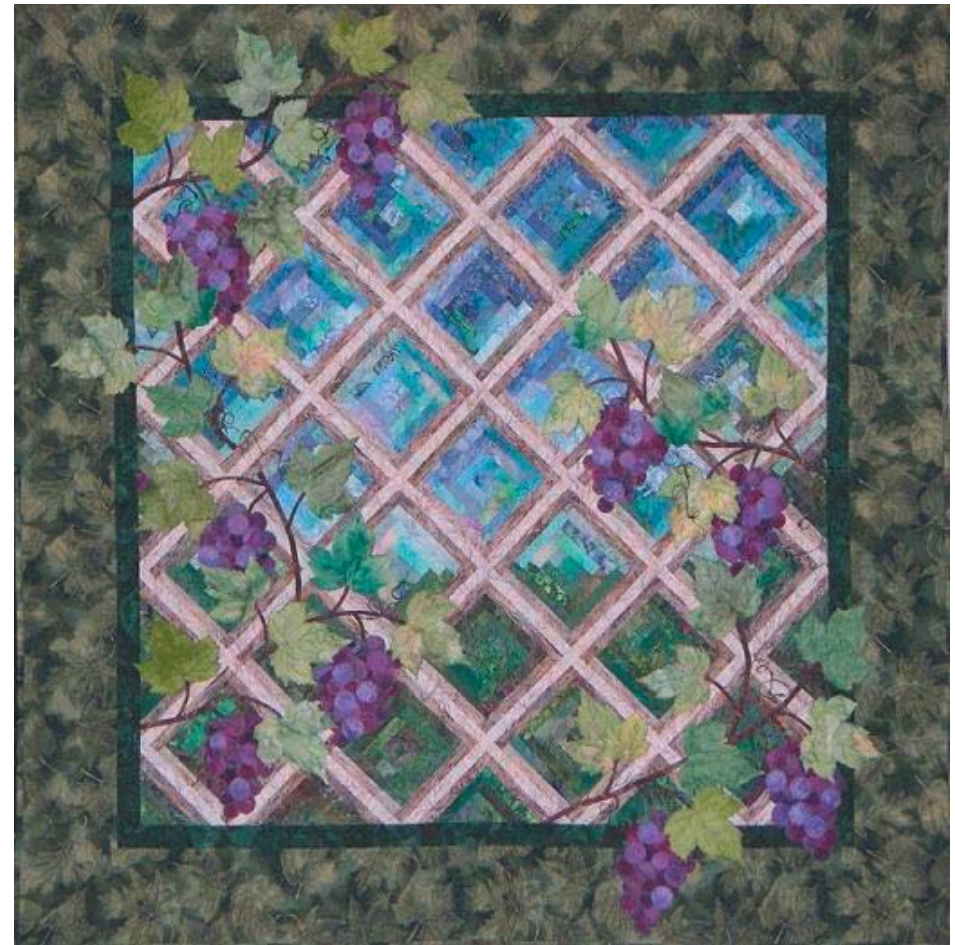
*Note: Background blocks are made up of 1 1/4" strips so this is a good time to go through your stash for more variety.

General sewing supplies:

- Rotary cutter, 6 x 24" rotary ruler and mat
- Sewing thread to blend with fabrics
- 1/2" bias tape maker
- 1/4" bias tape maker

No part of this pattern may be photocopied or reproduced without written consent of Lynn Majidimehr, except for your own personal use.

© Lynn Ann Majidimehr 2004 all rights reserved
lynn_am@hotmail.com



60" x 60" wall quilt



LAM Designs