

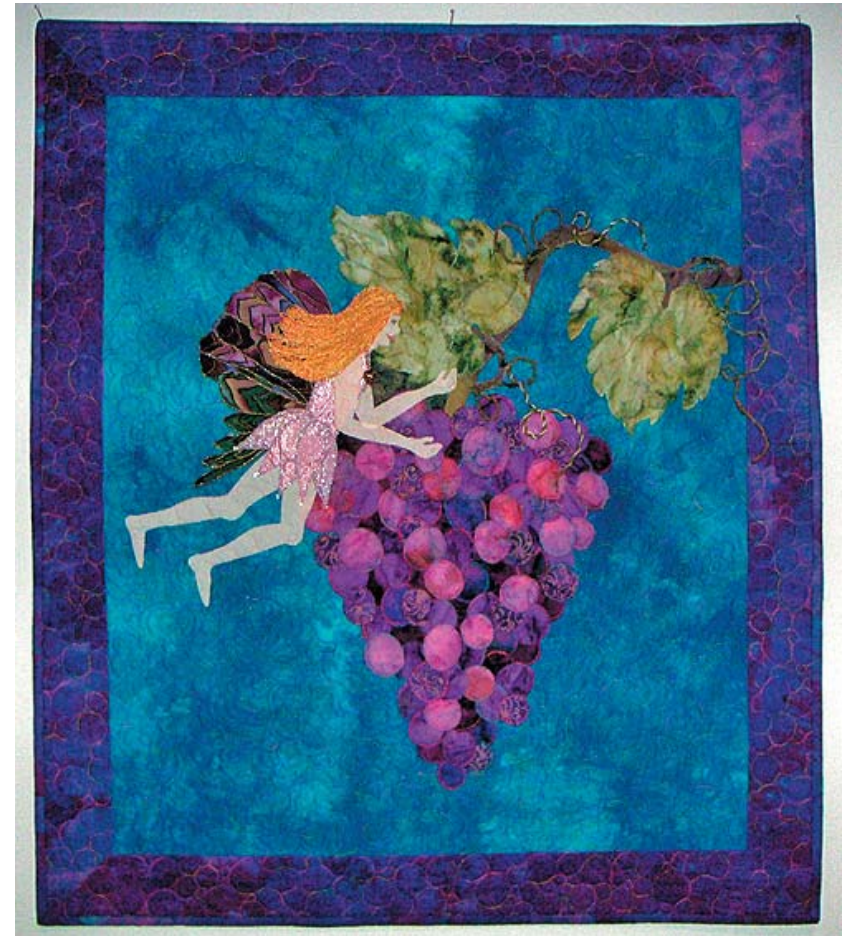
The Grape Fairy

Fabric requirements:

- 1 yard blue for background
- 2/3 yard purple for border and binding
- fat eighth of light, medium, and dark purple for grapes
- 8" x 10" brown for branch
- fat eighth green fabric for leaves
- fat eighth flesh for skin
- 8" x 8" pink iridescent or metallic for dress
- 8" x 10" fancy purple for wings
- 1 1/4 yards fabric for backing and rod pocket
- 32" x 37" batting

Other supplies required:

- 2 yards of fusible web
- 1 1/2 to 2 yards green yarn or fiber for tendrils
- 1 pkg size 5, varigated yellow or brown pearl cotton for hair
- 5 small drop beads for skirt ends
- 9 or more 8-12mm gold beads
- 1/2" grape or other charm
- applique pressing sheet (very helpful)
- permanent marker
- blue, pink and brown permanent fabric markers for face
- metallic, rayon or other embroidery thread to match hair
- 8" square (or embroidery hoop size) heavy water soluble stabilizer



28" x 33" wall quilt



LAM Designs

No part of this pattern may be photocopied or reproduced without written consent of Lynn Majidimehr, except for your own personal use.

© Lynn Ann Majidimehr 2005 all rights reserved
lynn_am@hotmail.com